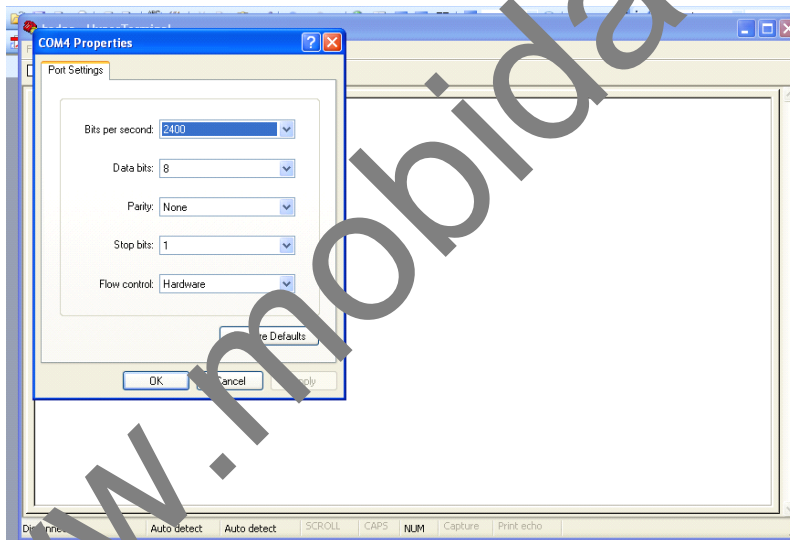
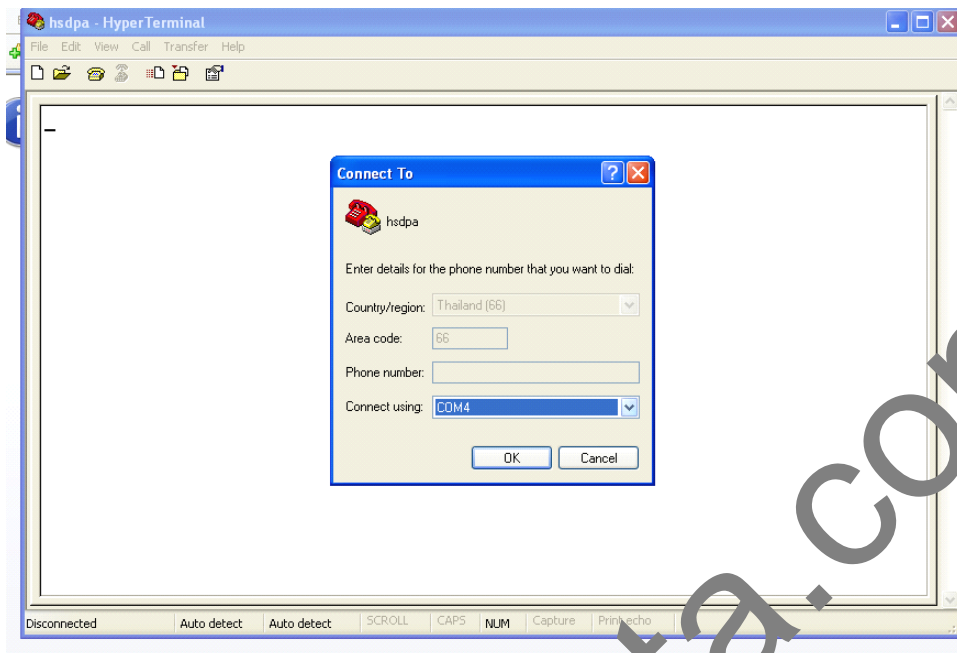
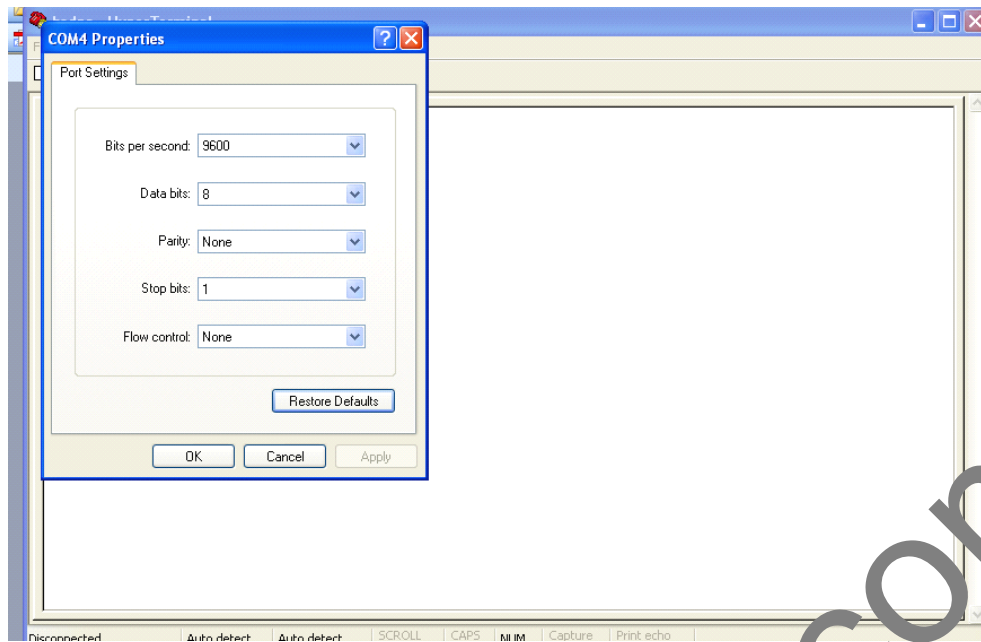


Before using Hyperterminal please exit the software  
Start>program>accessories>Communication>Hyper Terminal,  
2) Select the last COM Port.



Restore defaults



1) Check SIM status

AT+CPIN?[enter]

AT+CIMI[enter]

2) Check IMEI

AT+CGSN

3) Make calls out

ATD\*\*\*\*\*; //Do not forget"

4) How to make a second calling  
AT+VTS=\* (no need ";")

5) How to answer a calling

ATA

6) How to shut down a calling

AT+CHUP